

3t30m telescopic boom marine crane for onboard multi-purpose vessel

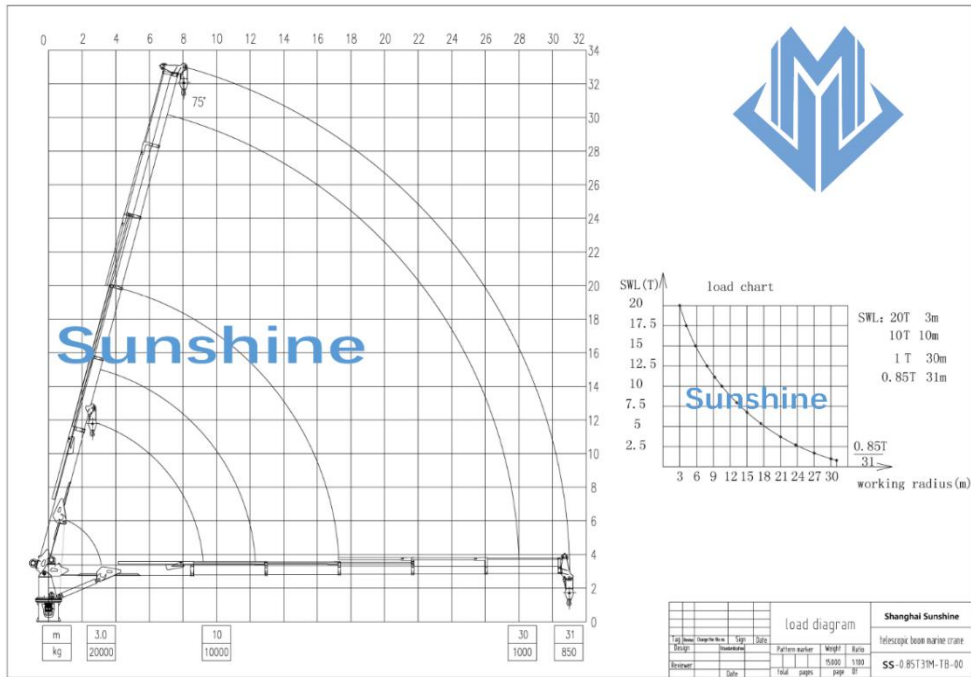
BRIEF INTRODUCTION

Generally, the telescopic boom marine cranes are built fully accordance with the client's required specification. Dependent on specification and application of the crane. The telescopic boom marine cranes can be supplied with various optional accessories. Some of these accessories are, operator cabin, wireless remote control, explosion proof electric components, man riding and jib support.

Technical specification

1	SWL	1t@30m
2	Max working radius	30m
3	Min working radius	3m
4	Hoisting speed	0~12m/min
5	Slewing speed	0.6r/min
6	Slewing angle	360° free
7	Luffing time	70s
8	Hook travel	30m
9	DFT of painting	320um
10	Extension time	100s
11	Working condition	
	Heel	≤ 5°
	Trim	≤ 2°
12	Electric motor	
	Power	55Kw
	Speed	1480r/min
	Power source	440V 50Hz,
	Protect class	F
	Working type	S1
13	Flow	100L/min
14	Design temperature	-10°~40°
15	Dead weight	~22000 kg

Load chart



General drawing

